



THE COUNCIL FOR AUSTRALASIAN TOURISM AND HOSPITALITY EDUCATION INC
(CAUTHE)

ABN: 99 849 437 226

Date: Friday 5 August 2016
Time: 10:00 am – 12:00 pm
Location: Toowong Rowing Club, St Lucia Queensland
Hosted by: University of Queensland

Contents

Minutes	2
Appendix 1: Financial report	5
Appendix 2: Secretariat report	8
Appendix 3: Special Interest Group Report	10
Appendix 4: Journal of Hospitality and Tourism Management (JHTM)	13

Minutes

Present:

	Title	First Name	Surname	Institution
1	Assoc Prof	Charles	Arcodia	Griffith University
2	Dr	David	Beirman	University of Technology Sydney
3	Assoc Prof	Pierre	Benckendorff	University of Queensland
4	Dr	Naomi	Dale	University of Canberra
5	Dr	Alison	Dunn	University of Tasmania
6	Dr	Sebastian	Filep	University of Otago
7	Assoc Prof	Elspeth	Frew	La Trobe University
8	Ms	Jane	Gentle	THE-ICE
9	Mrs	Penny	Jose (notes)	CAUTHE Secretariat
10	Dr	Catheryn	Khoo-Lattimore	Griffith University
11	Mrs	Dung	Le	Griffith University
12	Ms	Na	Li	University of Queensland
13	Assoc Prof	Leonie	Lockstone-Binney	William Angliss Institute
14	Assoc Prof	Gui	Lohmann	Griffith University
15	Dr	Judith	Mair (Chair)	University of Queensland
16	Dr	Laurie	Murphy	James Cook University
17	Ms	Margarida Abreu	Novais	University of Queensland
18	Dr	Kylie	Radel	Central Queensland University
19	Dr	Richard	Robinson	University of Queensland
20	Dr	Hiro	Saito	University of Queensland
21	Dr	Dale	Sanders	Edith Cowan University
22	Professor	Noel	Scott	Griffith University
23	Dr	Paul	Whitelaw	William Angliss Institute
24	Dr	Mieke	Witsel	Southern Cross University
25	Assoc Prof	Erica	Wilson	Southern Cross University
26	Dr	Tamara	Young	University of Newcastle
27	Ms	Danni	Zheng	University of Queensland

1. Apologies

Title	First name	Last name	Institution
Dr	Wendy	Hillman	Central Queensland University
Dr	Michael	Hughes	Murdoch University
Dr	Aise	Kim	University of South Australia
Dr	Pascal	Scherrer	Southern Cross University
Dr	Jennie	Small	University of Technology Sydney
Prof	Karen	Smith	University of Victoria Wellington
Prof	Betty	Weiler	Southern Cross University

2. Confirmation of previous MYM minutes 7 August 2015 (circulated)

Proposed: Noel Scott

Seconded: Leonie Lockstone-Binney

3. Executive Committee reports

3.1. Chair's report – Judith Mair

The meeting noted thanks to the University of Queensland, School of Business for its generous contribution to cover the venue hire for the Mid-year meeting and events.

An AHRC complaint regarding access issues at both the conference venue and the social events has resulted in the following actions:

- CAUTHE has taken out Professional indemnity and Directors & Associations liability insurances.
- A link to the MEA guidelines for accessibility to events has now been included in the conference bid document & guidelines.
- The Exec committee are discussing development of a dispute resolution (and possibly other) policy(ies).

Wider issues about accessibility and justice

- Gender equity – suggestion that CAUTHE adopt a consultative process to discuss equity issues.
- Catheryn Khoo-Lattimore has an interest in gender issues and may be in a position to lead discussions.
- Bursary funds use has been extended from 'for travel only' to 'facilitate attendance', and the number of bursaries has been increased.

Use of social media

- Discussion about development of a social media policy to help manage conference issues and comments
- Face-to-face communication should be encouraged in the first instance.

Conference strategic direction: research/academic or industry?

- There is a lack of awareness in the travel industry about CAUTHE conferences.
- Potential for a half-day 'industry engagement' workshop.
- Strategic plan priority is to consolidate service to current members.
- The strength of the conference is in networking, with work in progress presented rather than final work.
- Wider discussion regarding industry impact, beyond paper presentations may be useful.

3.2. Secretary's report – Dale Sanders

The newsletter is published twice a year, post- conference and mid-year meeting. Currently working on a 'Where are they now? 10 years on' featuring 2006 Best full conference and PhD paper winners and 2006 Exec committee members.

To contribute items related to CAUTHE activities members should contact Dale.

3.3. Treasurer's report – Noel Scott

The meeting acknowledged that the funds represent a 25-year history of the organisation and provides stability for future years. Investigate funds investment options (interest currently equates to 2-3 bursaries).

Report included in Appendix 1.

4. Secretariat report – Penny Jose

Report included in Appendix 2.

5. Conference reports

5.1. 2016 Blue Mountains International Hotel Management School - Judith Mair (report available in CAUTHE Members' only website)

5.2. 2017 Otago University – Sebastian Filep

- To be hosted from Tuesday to Friday 7-10 February.
- Broad theme: *Time for big ideas? Re-thinking the field for tomorrow?*

Planning is well underway, with the call for papers open and registrations live.

Conference promotions and delegates are being targeted throughout AU, NZ, USA and Asia with Prof Pauline Sheldon and Prof Brian King being confirmed keynote speakers. Conference participants are invited to attend a newly developed Research Assessment Workshop for CAUTHE 2017.

5.3. 2018 Conference – Tamara Young (Bid document CAUTHE members' only website)

The conference will feature accessibility initiatives including indigenous participation, gender equity and venue accessibility eg virtual attendance in the new (high tech) space building. Options for programming include incorporating a visit to the Hunter Valley.

It was proposed that CAUTHE accept the CAUTHE 2018 bid proposal to host the conference at University of Newcastle.

Proposed: Paul Whitelaw

Seconded: Sebastian Filep

All in favour

5.4. 2019 Conference – Judith Mair

A previous informal expression of interest from JCU (offshore in Singapore) has not progressed. There is one other expression of interest under consideration.

6. PhD/ECR workshop (report available in CAUTHE Members' only website)

7. MCA workshop – Naomi Dale (report available in CAUTHE Members' only website)

Action: Naomi Dale to follow up with Leo about access to slides from 2016 meeting.

8. Kindred Associations – Leonie Lockstone-Binney

ANZALS have been contacted re sharing professional liability insurance. There are plans to discuss a proposal for joint MYM with ANZALS and SMAANZ and follow up an expression of interest from TEFI. There has been no further progression with ITSA. It was noted that before entering into MoUs, both parties need to consider the value which will be gained from formalising the relationship.

9. Special interest groups – Penny Jose (for Wendy Hillman) Appendix 3

Action: Mieke to look at website options for housing T&L docs.

10. Journal report – Judith Mair (Appendix 4)

11. Other business

11.1. Request that Chapter directors complete the survey from Aise Kim.

Meeting closed: 12:10pm

CAUTHE Treasurer's Report Prepared 30 June 2016

This report accompanies the statement of financial affairs for CAUTHE for the period 01/01/2016-30/06/2016. It also includes forecast income and expenditure for the whole of 2016.

The financial statement includes all information available to me at the time of writing this report.

Total funds on hand as of 30th June are \$101,691.01, which is an increase on the opening cash balance as at 1st January 2016 are \$93,402.64. This change in cash position is largely a business as usual result. Overall, total income for the period 01/01/2016-30/06/2016 exceeded total expenditure by \$8,288.37.

Comparing income streams mid-year 2015 to 2016, membership has increased substantially (with a 36% in Associate membership). This resulted in a substantial increase in secretariat wages, which was due in part to the time required to manually process the large number of members who renewed or joined as part of their conference registration. Other factors which contributed to increased secretariat time included the need to deal with issues arising from the AHRC complaint; investigation of and seeking quotes for Professional Liability and Directors' insurances; increased SIG activity and dealing with issues arising from Elsevier's new paper management system. In addition, we have increased expenditure for conference bursaries and Special interest groups, and the Elsevier member access fee comes into effect in 2016.

Looking to the remainder of 2016, the membership income will increase in the second half of the year with most renewals expected between August and October 2016. Taking into account expenditure already outlaid year to date and that budgeted for the remainder of 2016, the cash balance is estimated to be \$94,000 (approx.) as at 31st December 2016. This is a slight increase of approximately \$500 over the year.

My thanks to Penny for her ongoing assistance in my role of Treasurer.

Noel Scott
CAUTHE Treasurer 2016

CAUTHE - Statement of Income and Expenditure
1 January – 30 June 2016

**Opening Balance as at 1
January 2016**

\$93,402.64

	2014	2015	2016
<u>Income</u>			
Bank Interest	\$562.49	\$156.40	\$178.34
Conference levy	\$6,175.00	\$2,325.00	\$3,175.00
Conference proceedings	\$620.00	\$0.00	\$0.00
Elsevier Editorial Stipend			\$2,715.98
Membership	\$10,081.33	\$9,950.00	\$15,863.44
Royalties	\$1,541.12	\$1,979.06	\$2,053.89
SIG Income			\$1,620.00
Income to 30 th June	\$18,979.94	\$14,010.46	\$23,986.65

Expenditure

Bank fees	\$3.50	\$3.25	\$12.00
Bank Fees PayPal	\$155.59	\$163.73	\$185.29
Banner	-	\$445.50	-
Conference expenses	\$82.00	\$383.42	\$150.64
Department of Fair Trading	\$52.21	\$98.39	\$54.22
Gifts	\$56.20	\$288.42	\$567.65
Insurance	-	-	\$1,775.04
Journal - JHTM final issue	\$5,439.56	-	-
PhD workshop	\$153.00	-	-
Postage and stationery	\$26.30	-	-
Secretariat wages	\$4,700.00	\$5,233.00	\$9,386.00
Special interest groups	\$398.00	\$759.37	\$2,805.94
Sponsorship	\$220.00	-	-
Strategic Plan – graphic design			\$150.00
Teleconferences	\$110.25	\$114.00	\$133.00
Website hosting & maintenance	\$16,500.00	\$538.09	\$478.50
Expenditure to 30 th June	\$27,896.61	\$8,027.17	\$15,698.28

Balance of Trading account			\$9,510.60
Balance of Mastercard account			\$74.57
Balance of Investment account			\$32,105.84
Balance of Term Deposit			\$60,000.00

**Overall cash at bank 30th June
2016**

\$101,691.01

Proposed Income and Expenditure Activity for the year 2016

Opening Balance as at 1 January 2016			\$93,402.64
	2015	2016	
<u>Forecast Income (whole year)</u>			
Bank Interest	\$2,082.56	\$1,500.00	
Conference levy	\$2,325.00	\$3,175.00	
Conference proceedings	\$600.00	\$600.00	
Donation - Conference	\$10,000.00		
Elsevier Editorial Stipend	\$2,630.33	\$2,713.98	
Membership fees	\$27,204.24	\$30,000.00	
Royalties	\$2,364.16	\$2,500.00	
Total Income	\$47,206.29		\$40,488.98
<u>Forecast Expenditure (whole year)</u>			
Bank fees	\$40.25	\$50.00	
Banner	\$445.50	-	
Conference - bursaries	\$6,180.00	\$7,500.00	
Conference - secretariat expenses	\$678.42	\$1,700.00	
Dept of Fair Trading	\$98.39	\$55.00	
Elsevier member access fee	-	\$2,716.03	
Gifts	\$288.42	\$600.00	
ISBN	\$84.00	-	
Mid-year meeting - catering	-	\$1,000.00	
Mid-year meeting - secretariat expenses	\$572.63	\$300.00	
PayPal fees	\$585.88	\$600.00	
PhD/ECR and other workshops	-	\$1,000.00	
Postage and stationery	\$21.24	\$30.00	
Secretariat wages	\$12,111.00	\$18,000.00	
Special interest groups	\$1,281.95	\$5,000.00	
Strategic Plan	-	\$150.00	
Teleconferences	\$266.00	\$200.00	
Website hosting & maintenance	\$1,243.45	\$1,000.00	
Total Expenditure	\$23,897.13		\$39,901.03
Estimated Overall Cash at Bank as at 31 December 2016			\$93,990.59

Appendix 2: Secretariat report

Mid-year meeting 2016 member update

1. Membership numbers

Table 1 shows a 41% increase in associate and student membership numbers since the 2015 mid-year meeting, and a reversal of the previous downward trend.

Chapter membership has remained stable with 30 members. Affiliate membership has also remained the same. STR Global joined as an Affiliate member in April, however, the National Tourism Alliance (joined 2012) have not renewed their membership.

Table 1: CAUTHE members (as at 30 June 2016)

Membership	Year							
	2009	2010	2011	2012	2013	2014	2015	2016
Associate	30	151	141	177	148	136	94	137
Student	22	20	45	45	44	39	39	50
TOTAL	52	171	186	222	192	175	133	187
% change		57%	12%	3%	-14%	-9%	-24%	41%
Chapter	22	22	26	26	26	26	30	30
Affiliate	3	4	4	3	5	5	4	5

2. International members

The overall numbers of international members more than doubled in 2016 (Table 2), most likely due to the hosting of the conference in Sydney. The proportion of the total international membership, outside Australia and New Zealand, is 21%. The majority of international members are from the United Kingdom and Asia.

Table 2: International members (as at 30 June 2016)

Country	2009	2010	2011	2012	2013	2014	2015	2016
Australia	109	159	187	177	154	140	109	128
New Zealand	2	8	8	18	32	14	11	20
International								
UK	4	8	7	8	6	9	2	11
China/HK	1	6	2	3	3	2	2	4
Japan	1	1	1	1	1	2	2	4
Singapore	1	0	1	1	1	2	3	4
Norway								3
Switzerland	1	1	2	2	1	1	1	3
Other*	3	6	9	12	5	5	3	10
TOTAL	11	23	21	27	17	21	13	39
% of total	9%	12%	10%	12%	8%	12%	10%	21%

* less than 2 members

3. Social media

CAUTHE's presence on various social media websites, which includes three Facebook pages, five LinkedIn groups, a Flickr website and Twitter continues to grow. These media are used to promote special interest group, conference and workshop activities, announce calls for papers, provide Journal new article alerts and highlight member successes and publications.

Media	Created	July 2012	Feb 2013	July 2013	June 2014	July 2015	July 2016
Facebook							
CAUTHE	Nov 2012	1	8	98	158	308	392
Event Studies	May 2012	27	28	27	26	29	32
Tourism and Volunteering	Jan 2014	--	--	--	20	26	26
LinkedIn							
CAUTHE	Jun 2012	13	18	33	42	61	161
Emerging Markets SIG	Mar 2012	143	172	196	271	376	417
Tourism Risk, Crisis and Recovery Management	May 2012					39	40
Teaching and Learning SIG	May 2012	11	13	15	18	36	44
Transport SIG	Jul 2012	9	9	12	14	17	17
Flickr							
Views	Feb 2011	11,240	13,116	16,466	33,365	43,678	52,029
Photos		--	989	1,249	1,544	1,862	1,966
Twitter @cauthe1							
Followers	Feb 2013	--	1	3	32	38	53

Prepared by:

CAUTHE Secretariat

Penny Jose

30 July 2016

Appendix 3: Special Interest Group Report

CAUTHE presently supports eight SIGs – some have been active so far in 2016. Key activities of each SIG are presented below. Highlights include:

- Members of the *Critical Approaches to Tourism and Hospitality* SIG are contributing to a forthcoming Special Issue of the *Journal of Hospitality and Tourism Management*, which will be edited by Candice Harris, Jennie Small and Erica Wilson.
- The *Information and Communications Technologies* SIG was approved for inclusion in the SIGs at the 11 March 2016, CAUTHE Executive meeting.
- Pierre Benckendorff has stepped down as co-chair of the *Teaching & Learning* SIG. A small group of CAUTHE T&L SIG members met at the CAUTHE Conference in February to share SIG news and member activities. They have been working on the following projects: Publication; Indigenisation of Tourism Education; Work Integrated Learning; and, Teaching and Learning Standards.
- Just over 35 attendees, including a number of senior industry leaders, were present at the *Tourism, Risk and Recovery* SIG meeting at the CAUTHE Conference in Sydney, in February.
- Three SIG report request emails have been sent so far in 2016. These emails have asked for information about the current activities which have been reported to the monthly Executive meetings and in the CAUTHE Newsletter. The resulting information from these reports is also presented here at the MYM.
- Each SIG is now required to report twice per year at the MYM and the AGM, with other reports of requests for funds, as the need arises.

Activities and proposed activities for 2016 are as follows:

1. CRITICAL APPROACHES IN TOURISM AND HOSPITALITY (CATH)

Co-ordinators: Erica Wilson (SCU), Jennie Small (UTS) and Candice Harris (AUT)

A successful meeting of the Critical Approaches in Tourism and Hospitality SIG was held at the 2016 CAUTHE Conference in Sydney. The topic of discussion was, "A Critical Lens on Hospitality and Tourism Work". The discussion was led by Professor Tom Baum, from the University of Strathclyde, Professor Marg Deery, from the University of Surrey, and Dr Richard Robinson, from the University of Queensland. The discussion focused on issues relating to social justice, equitable relationships in workplaces and emancipation through work.

Other news: The discussion on issues relating to social justice, equitable relationships in workplaces and emancipation through work fits with the forthcoming Special Issue of *Journal of Hospitality and Tourism Management*, and will be edited by Candice Harris, Jennie Small and Erica Wilson.

2. EMERGING MARKETS (EMSIG)

Co-ordinators: Bryon Keating, Songshan (Sam) Huang and Anton Kriz

Nothing to report

3. EVENT STUDIES

Co-ordinators: Leonie Lockstone-Binney, Martin Robertson

Nothing to report

4. INFORMATION & COMMUNICATIONS TECHNOLOGIES (ICT)

Co-ordinators: Marianna Sigala, Ian Yeoman

The ICT SIG was approved for inclusion in the SIGs at the 11 March 2016, CAUTHE Executive meeting.

5. TEACHING & LEARNING

Co-ordinators: Diane Lee, Mieke Witsel (SCU), and Nisha Abm (Singapore)

Pierre Benckendorff has stepped down as co-chair of the T&L SIG. The Executive would like to gratefully thank Pierre on his rich and robust contribution to the T&L SIG over the last four years, and wish him well in his future endeavours in tourism and learning and teaching.

Further news: A small group of CAUTHE T&L SIG members met at the CAUTHE Conference in February to share SIG news and member activities. Following is an overview of the numerous events and activities of T&L SIG members:

Publication Projects

- JOHLSTE Special Issue on Critical Perspectives in Tourism Education: 6-7 papers are under review for this special issue edited by SIG members Tamara Young, Mieke Witsel and Andrea Boyle.
- Edward Elgar Handbook of Teaching and Learning in Tourism: 41 chapter manuscript edited by Pierre Benckendorff and Anita Zeher has been submitted to the publisher and is expected to be published towards the end of 2016.

Indigenisation of Tourism Education

- Researchers from the University of Newcastle, Griffith University, the University of Technology Sydney, Southern Cross University and the University of South Australia to develop an OLT grant application entitled, 'Resourcing tertiary educators to Indigenise curricula: Building a Community of Practice'.

Work Integrated Learning

- There is an interest in the T&L SIG to share experiences, as both researchers and educators, regarding WIL in order to navigate and investigate this difficult terrain. If you would like to be involved in discussion regarding WIL and in potential research project(s) please contact – Anne Zahra: a.zahra@waikato.ac.nz

Teaching and Learning Standards

- The final report for the OLT Setting the standard: establishing threshold learning outcomes for tourism, hospitality and events higher education in Australia is now available from the OLT website: <http://www.olt.gov.au/project-setting-standard-establishing-threshold-learning-outcomes-tourism-hospitality-and-events-hig>.

Congratulations to the following T&L SIG members

- Dr Tamara Young (UoN) received an OLT citation for, 'The design and teaching of research-informed and industry-relevant curricula that fosters independent thinking among tourism students, and creates work-ready graduates'.
- A/Prof Anoop Patiar and colleagues from Griffith, UQ, BMIHMS and Edith Cowan who received an OLT Innovation and Development Grant to develop a virtual field trip tool for food and beverage students.

6. TOURISM AND VOLUNTEERING

Co-ordinators: Stephen Wearing (UTS) and Simone Faulkner (UTS)

The SIG at CAUTHE went well with about 6 people and about 5 apologies of those who went to the Critical Studies and Events SIGs - the meeting was convened and then went on to discuss Jane Godfrey's poster. No events are planned as yet. There a few things happening in the UK in July about which details will be provided later.

7. TOURISM RISK, CRISIS AND RECOVERY

Co-ordinators: Brent Ritchie (UQ) and David Beirman (UTS)

The SIG held a very successful symposium on 12 Feb at the Blue Mountains International Hotel School – Sydney Campus, directly following the 2016 CAUTHE conference. Just over 35 attended including a number of senior industry leaders. The SIG was treated to an incredibly high standard of keynote presentations from the tourism industry leaders and tourism academics. After lunch a lively panel session moderated by Prof Brent Ritchie SIG Co Chair, included representatives from DFAT, The Insurance Council of Australia, SOS International, Walkley Award Winning TV reporter Adam Walters from TEN Eyewitness News and SIG's other co-chair David Beirman.

All attendees were fully engaged during the day and the co-organisers, Dr Gabby Walters UQ and Dr David Beirman UTS thanked the staff of the Blue Mountains International Hotel School for providing a high quality and totally supportive venue (especially just after they had hosted the CAUTHE Conference). To date this Symposium has been the SIG's most successful event and it gives us confidence to run future events. The only negative was that despite a major effort to invite industry attendees with articles in the travel industry media, industry attendees numbers were small but the few who did come were some of the most influential people in the Australian travel industry, including Rick Myatt head of AFTA Education and Training and Dennis Bunnik, Chairman of the Council of Australian Tour Operators.

Gabby Walters and David Beirman are co-editing a special Risk and Crisis Edition of the CAUTHE journal, *The Journal of Tourism and Hospitality Management*.

8. TOURISM AND TRANSPORT

Coordinators: Gui Lohmann and David Timothy Duval

Nothing to report

FURTHER INFORMATION

A request went out to all SIG co-ordinators on Tuesday 8 March 2016 from Dale Sanders for newsletter contributions from all the SIGs for inclusion in the newsletter.

Wendy Hillman
CAUTHE SIG Co-ordinator 2016
29 July 2016

Appendix 4: Journal of Hospitality and Tourism Management (JHTM)

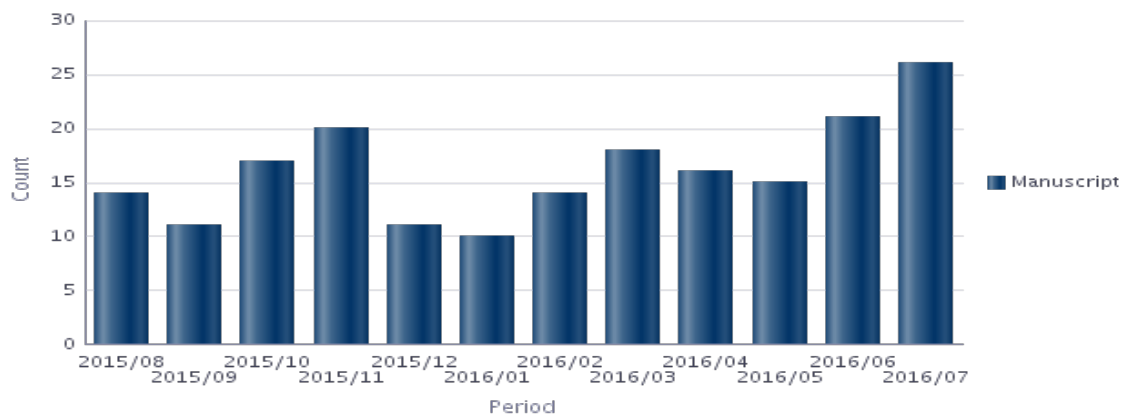
2016 CAUTHE Mid-Year Report

The year continues to be a busy one for JHTM with the number of submissions increasing substantially. In addition to the increased manuscript submissions, the editorial team (Professors Margaret Deery, Anna Leask and Associate Professor Asad Moshin) have been working the new hospitality and tourism publisher at Elsevier, Mr David Spencer, to improve the EVISE system. While there are gradual improvements to the system to make it more user friendly, there are still areas that require more work. The consequence of these system 'glitches' is that reviewers have often found it difficult to access manuscripts and we have lost a number of reviewers because of the poor system. We currently have an acceptance rate for reviewer invitations of 44%.

We have also had one of our Associate Editors, Professor Anna Leask resign from her position with the journal. This is a great loss as Anna has been a dedicated Associate Editor but she felt that the EVISE system compromised the journal's quality and reflected poorly on both the team and the journal. I wish to thank Anna for doing such an excellent job, especially under such difficult circumstances. The CAUTHE executive advertised for Anna's replacement and a very high quality field of applications were submitted. Anna's replacement will be announced over the next weeks.

Below are data for the year from August 2015 to July 2016.

Figure 1: Submissions August 2015-July 2016



As illustrated by Figure 1, the number of submissions has increased over the year so that the total number of submissions over this time was 193. Unfortunately, data were not available for the previous year to compare the number of submissions.

Figure 2: Editorial Outcomes

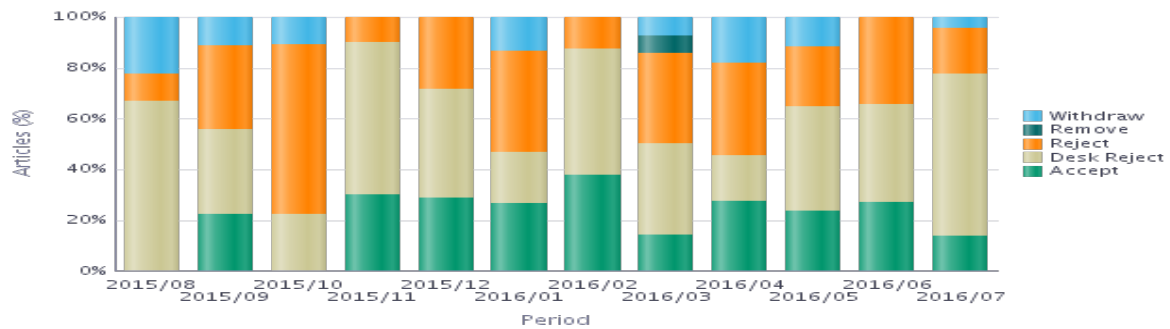


Table 1: Editorial Outcomes by Number of Submissions

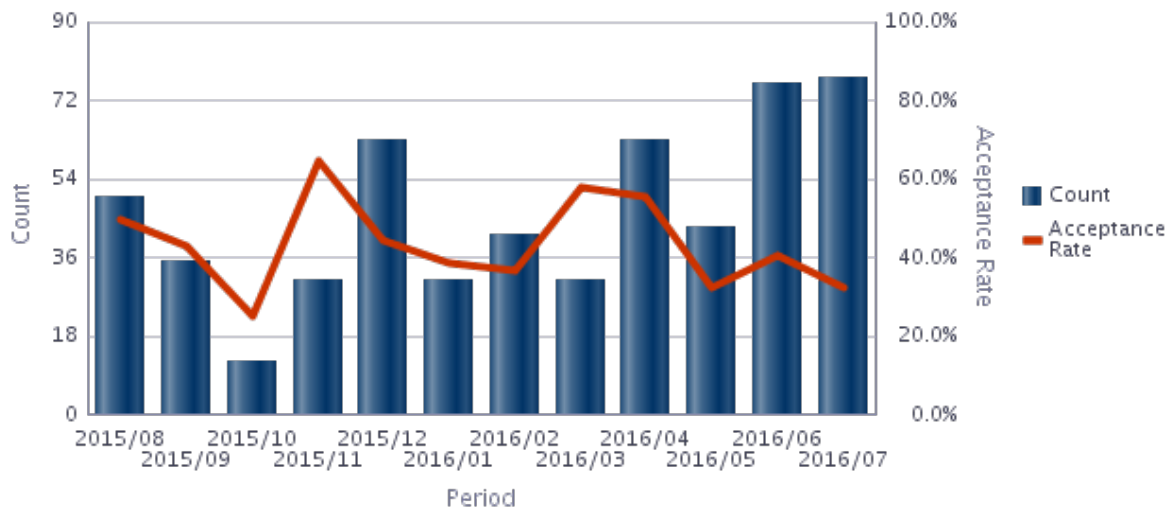
Period	Accept	Desk Reject	Reject	Remove	Withdraw	Manuscript
2015/08		6	1		2	9
2015/09	2	3	3		1	9
2015/10		2	6		1	9
2015/11	3	6	1			10
2015/12	2	3	2			7
2016/01	4	3	6		2	15
2016/02	3	4	1			8
2016/03	2	5	5	1	1	14
2016/04	3	2	4		2	11
2016/05	4	7	4		2	17
2016/06	7	10	9			26
2016/07	3	14	4		1	22
Grand Total	33	65	46	1	12	157*

*For some reason the data here only include 157 manuscripts rather than the 193 which were submitted.

The acceptance rate over this period (Table 1) was 21% with a desk reject rate of 41% and a reviewer reject rate of 30%. Reasons for the desk reject included poor research design, inadequate literature reviews, plagiarism and an overall poor fit with the journal's requirements and focus.

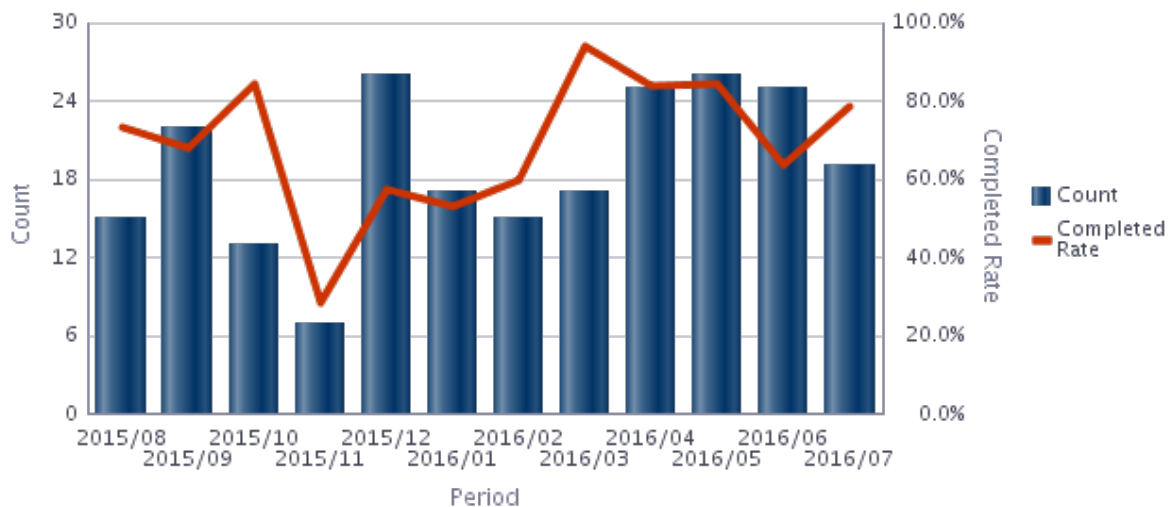
Reviewer Details

Figure 3: Reviewer Invitations



As stated previously, it is increasingly difficult to obtain reviewers and Figure 3 illustrates the decline in reviewer invitation acceptance rates. This is perhaps due to the EVISE system which has not worked well for some reviewers, but it is also possible that there is an overload of review invitations from all journals.

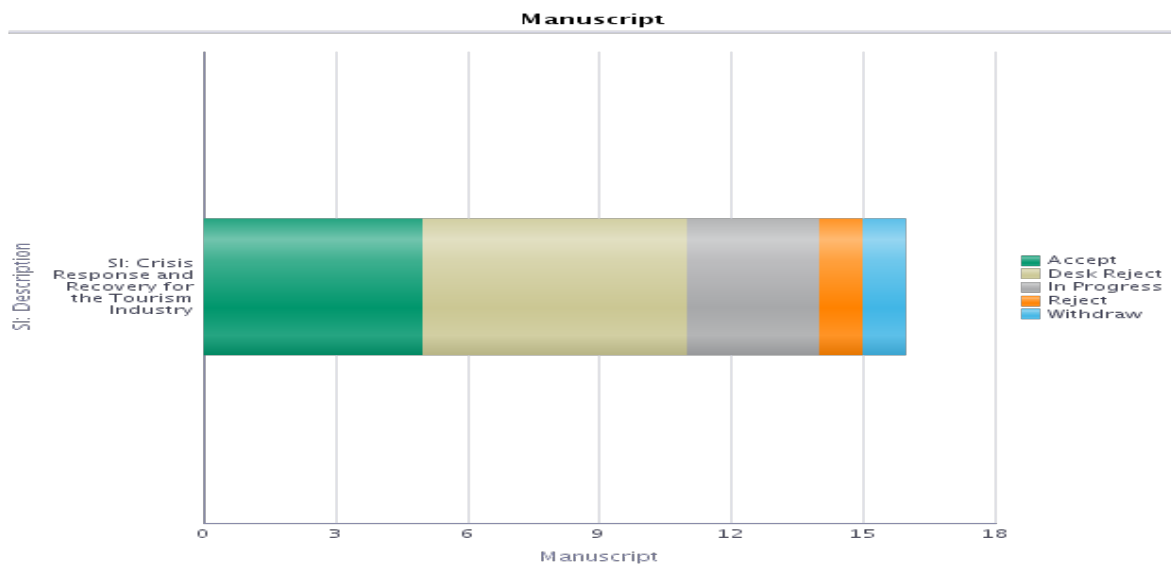
Figure 4: Reviewer Completion Rates



Special Issues

One of the three Special Issues to be included in JHTM's publications 2016/2017 was processed over the period of August 2015 to July 2016. This Special Issue on Crisis Response and Recovery for the Tourism Industry is about to be published with an excellent editorial by the editors, Dr Gabby Walters and Dr David Beirman. Details of the process are contained in Figure 5.

Figure 5: Special Issue on Crisis Response and Recovery for the Tourism Industry



Two other Special Issues are currently underway with editors, Associate Professors Erica Wilson and Candice Harris and Dr Jennie Small bringing together research on 'The Critical Lens on Hospitality and Tourism Work' and Drs Naomi Dale and Patrick L'Espoir Decosta working on 'Tourism, Hospitality & Events Education: The Challenges and Opportunities presented by Learning Standards'.

Professor Margaret Deery
Editor-in-Chief, *Journal of Hospitality and Tourism Management*