

PROPOSAL TO HOST

THE COUNCIL FOR AUSTRALASIAN TOURISM AND HOSPITALITY EDUCATION CONFERENCE 2020 (CAUTHE)

FEBRUARY 2020, AUCKLAND, NEW ZEALAND

AUT

A
AUCKLAND

**100% PURE
NEW ZEALAND**
businessevents.newzealand.com

Contents

SECTION 1.

YOUR LOCAL HOST

- ▶ Letter of Invitation 4
- ▶ Local Organising Committee 5
- ▶ Host Institution 6

SECTION 2.

CONFERENCE INFORMATION

- ▶ Conference Venue 8
- ▶ Potential Social Function Venues 10
- ▶ Conference Management 11
- ▶ Conference Theme 12
- ▶ Conference Programme 13
- ▶ Conference Timeline 14
- ▶ Conference Considerations 15
- ▶ Budget 16

SECTION 3.

CONFERENCE DESTINATION

- ▶ Accessible Auckland 18
- ▶ Accommodation 19
- ▶ Proximity Map 21
- ▶ Attractions 22
- ▶ New Zealand: what you need to know 24



SECTION 01.

YOUR LOCAL HOST



LETTER OF INVITATION

The logo for Auckland University of Technology (AUT), consisting of the letters 'AUT' in a bold, white, sans-serif font on a black rectangular background.

6 December, 2017

Dear CAUTHE Chair

Please accept the School of Hospitality and Tourism, Auckland University of Technology's bid to host CAUTHE 2020 in Auckland, New Zealand.

The AUT School of Hospitality and Tourism is home to a number of internationally recognised researchers, the New Zealand Tourism Research Institute and a vibrant and growing post graduate programme, including over thirty PhD students. Flagship programmes include the Master of International Hospitality Management, Master of International Tourism Management and the Master of Gastronomy. The rising status of the School was recently recognised by being placed 45th in the world in the subject area of Hospitality and Leisure Management in the QS World University Rankings. AUT is in the top 2% of universities in the world in the QS rankings. The School has successfully hosted the International Coastal Martine Tourism Society Congress in 2007, the New Zealand Tourism and Hospitality Research Conference in 2010 and the 13th APacCHRIE Conference in June 2015 and looks forward to the chance to build on the success of those events.

Auckland is a vibrant multi-cultural venue, with excellent international transport links and world-class hospitality and tourism products showcasing this magnificent harbour city. The Auckland University of Technology City Campus is in the heart of the city centre and the conference will be housed in AUT's Sir Paul Reeves Building, an innovative example of contemporary teaching spaces and breath-taking architecture. The AUT City campus is surrounded by accommodation providers to match every budget, and a plethora of outstanding food and beverage options.

The Conference Committee has submitted a detailed budget for hosting the conference to myself, the School and Faculty financial controllers and the Dean of the Faculty of Society and Culture. The Committee has received full delegation of appropriate institutional funds and sign off of the budget from myself and the Dean.

We look forward to presenting our bid to host the 2020 CAUTHE Conference.

Yours sincerely

A handwritten signature in cursive script that reads 'Linda O'Neill'.

Linda O'Neill

Head of School

School of Hospitality and Tourism

LOCAL ORGANISING COMMITTEE



Dr Tracy Harkison

Senior Lecturer

School of Hospitality and Tourism, Auckland University of Technology

Tracy is a Senior Lecturer at the School of Hospitality and Tourism at Auckland University of Technology. She worked 14 years in the hospitality industry. Her research interests include luxury accommodation experiences, hospitality education, human resource management and cruise ship experiences. Tracy completed her PhD in 2016, looking at how a luxury accommodation experience is co-created. Tracy has been a member of two previous conference committees - the New Zealand Tourism and Hospitality Research Conference, 2010, and APaCHRIE 2015. She is presently involved in organising the Critical Hospitality Studies Symposium here at AUT in 2018.



Dr David Williamson

Senior Lecturer

School of Hospitality and Tourism, Auckland University of Technology

David is a Senior Lecturer at the School of Hospitality and Tourism, AUT. He spent 18 years working in the hospitality industry as a bar and hotel manager and restaurateur. He has been Programme Leader for the Bachelor of International Hospitality Management and Head of Department, Hospitality. His research interests include work, employment and labour market issues in hospitality and tourism. David is a member of the New Zealand Tourism Research Institute (NZTRI) and the New Zealand Work Research Institute (NZWRI). David completed his PHD in 2017, a history of employment relations in the New Zealand hotel sector, 1955-2000.

HOST INSTITUTION

CAUTHE 2020 will be hosted by the School of Hospitality and Tourism at Auckland University of Technology

The Conference Committee currently consists of the co-chairs: Dr Tracy Harkison and Dr David Williamson. Finance and Sponsorships roles have also been confirmed for Nancy McIntyre (School Manager) and Lindsay Neill. However the rest of the committee roles will be filled when the bid has been successful.

AUT Profile

Auckland University of Technology is New Zealand's second largest and fastest growing university. Established in 2000, 29,000 students are enrolled at AUT across our three teaching campuses located in Auckland – New Zealand's fastest growing city. AUT has consistently led undergraduate and postgraduate enrolment growth of both New Zealand and international students across the wide range of professional disciplines we teach. We are ranked in the top 2% of universities in the world, ranked 15th in the world for international outlook, and are world-ranked in 11 subject areas.

AUT students are provided with a unique learning experience through engagement with industry, business and international partners, the ongoing development of modern teaching and learning facilities, and a focus on research that addresses issues facing the environment and society. Students are encouraged to participate, develop their own opinions, gain knowledge and learn how to apply it in real situations. We produce great graduates who enter the workforce able to challenge routine thinking and provide innovative solutions to industry.

Times Higher Education (THE) World University Rankings

Top university for international outlook in Australia and New Zealand

In the Times Higher Education World University Rankings 2018, AUT is ranked 15th in the world for International Outlook (making us first in New Zealand and Australia), and among the world's top 500 universities. Times Higher Education ranks universities for international outlook according to their ability to attract international students and staff, as well as how well they engage and collaborate with overseas universities.

One of the world's top young universities

In 2017, Times Higher Education ranked AUT as one of the world's top 150 young universities, based on the quality of teaching, research, citations, international outlook and industry income. AUT is also one of the world's top millennial universities (those founded in the 21st century) - ranked as number 1 in Australasia and 14 in the world.

QS World University Rankings top 500

In the QS World University Rankings 2018, AUT is ranked as one of the top 450 universities in the world (in the 441-450 band). This puts AUT in the top 2% of

universities worldwide. AUT's international outlook was highlighted, with AUT ranking #29 in the world for attracting international students and #64 for attracting international academic staff.

QS Top 50 Under 50

In the QS ranking of the top 50 world universities under 50 years old, AUT was ranked in the #61-70 band. We are the 10th youngest university acknowledged in this ranking.

QS World University Rankings by Subject 2017

AUT subjects are world class:

Hospitality - top 45

Art and Design - top 100

Sports - top 100

A 5-Star rating from QS

AUT has been rated as a five-star university by world university rankings organisation QS. We also achieved a maximum five stars for Teaching, Employability, Internationalisation, Facilities and Inclusiveness. AUT's focus on Social Responsibility was recognised with a four-star rating.

SECTION 02.

CONFERENCE INFORMATION



Chris Williams

Making Our Stories Matter

THE COUNCIL FOR AUSTRALASIAN TOURISM AND HOSPITALITY EDUCATION CONFERENCE 2020 (CAUTHE),
AUCKLAND, NEW ZEALAND

YOUR CONFERENCE VENUE

Auckland University of Technology (AUT)



The conference will be hosted in the main city campus of AUT. Our City Campus is in the heart of Auckland city, just off Queen Street, the main thoroughfare of the CBD.

AUT is the university for the changing world, an increasingly powerful force for learning and discovery. A contemporary, connected and relevant study destination, it has differentiated itself through its commitment to widening university access and participation, and its engagement with business, industry and communities. With three campuses across Auckland, AUT has a range of international research programmes, the fastest growing university enrolment in New Zealand and is an important contributor to higher learning in New Zealand.

AUT's City Campus is home to the popular Sir Paul Reeves Building and the City Conference Centre. The campus is located just minutes from Auckland's main street - Queen Street, and close to parking, public transport and a variety of accommodation options. The newest addition to the City Campus, the Sir Paul Reeves Building, offers a range of unique function spaces spread across four levels. The eco-friendly design offers flexible, light open spaces with an abundance of natural light. The award winning building houses the very latest in audio visual and interactive technology, making it a fantastic option for CAUTHE 2020.

CAUTHE 2020 will be hosted in the Sir Paul Reeves Building, a modern and fully accessible architectural landmark.

AUT is deeply committed to accessibility, with Vice Chancellor Derek McCormack being recently profiled as an accessibility leader and advocate by Be.Accessible, an organisation dedicated to promoting physical, social and personal accessibility. Under Derek's leadership, AUT was the first university in the country to recognise accessibility as both a responsibility and a key opportunity. AUT's Directions to 2025 strategy reveals their ongoing commitment to this vision by documenting their plans to become a Be.Welcome Platinum accessibility-rated university.

AUT has now had 14 buildings across their three Auckland campuses assessed by our Be.Welcome team. Of these, six have received our Gold accessibility rating! The Sir Paul Reeves Building holds Gold Star Accessibility rating.

Summary

The Sir Paul Reeves Building (WG) reflects what students around the world want from their learning spaces - areas throughout are flexible, contemporary and invite collaboration. The building incorporates digital technology, sustainable environmental materials and accessibility is of a high standard. WG is sited on sloped terrain in Auckland's CBD. The design of WG creates natural flow between buildings, providing social learning

spaces, state of the art technology, well-positioned signage, slip resistant surfaces, handrails and ground tactile markers where changes in the environment occur. AUT understands the diversity of students learning needs and supports students with access needs to participate fully in their learning Experience.

[View the full accessibility report for AUT - Sir Paul Reeves Building \(WG\) here.](#)

Ratings by Access Group

To Be. Welcome Assessment rates the accessibility of the organisation in each of the following 5 access groups, as well as providing an overall rating:

Overall Rating	Gold 83%
Vision	Gold 83%
Hearing	Gold 83%
Mobility	Gold 87%
Parents	Gold 87%
Learning & Intellectual	Gold 86%

YOUR CONFERENCE VENUE

Auckland University of Technology (AUT)

Supporting conferencing and social spaces will be provided by the School of Hospitality and Tourism, which sits right next to the Sir Paul Reeves building.

The AUT city campus is surrounded by extensive transport networks and a wealth of accommodation options. Over 30 accommodation providers are in the central city area offering options from budget backpackers to 5 star hotels. The School of Hospitality and Tourism has close relationships with many of the major accommodation organisations through our industry Partnership Board and will be exploring options for delegates with these groups.

In keeping with the conference theme of “new perspectives on diversity”, the conference will have an Inclusion and Accessibility subcommittee that will audit all external venues to ensure accessible and inclusive compliance, as well as liaising with AUT Events to ensure all childcare, transport, dietary and programming requirements and other inclusive conference actions are planned and engaged well in advance.

Diversity

AUT is a vibrant and diverse university which recognises that success is not defined by gender, gender identity, socio-economic backgrounds, ethnicity or disability. We are committed to building a safe, positive, and inclusive work and study environment characterised by the free exchange of diverse ideas, skills and cultural perspectives. AUT is Rainbow Tick Certified. Rainbow Ticks are awarded to organisations that complete a Diversity & Inclusion certification process. The certification process tests whether a workplace understands, values, and welcomes sexual and gender diversity. Tests are carried out on the practices and policies that manage the HR (Human Resource) of an organisation. Where there are deficiencies training, advice and support is offered.

AUT defines diversity as understanding, respect and embracing the uniqueness that results from differences in gender, sexuality, race, ethnicity, sexual orientation, marital status, age, disability, religious and ethical beliefs or political opinions.

We celebrate diversity not as an end in itself but as a means by which AUT can enable staff and students from diverse backgrounds to:

- Feel a sense of belonging
- Achieve positive educational outcomes
- Gain access to employment opportunities
- Fulfil their potential as global citizens

These principles of diversity will be built into the CAUTHE 2020 conference.

Before we put together our bid document we consulted with Dr Keri-Anne Wikitera so we could fully involve indigenous groups. We have also looked at the three principles of the Treaty of Waitangi - partnership, participation and protection, in relation to the conference and its participants. We have consulted with Dr Shelagh Mooney in regards to gender and diversity issues, and have also been in consultation with the rainbow community here at our own University in order to gain their input. After many consultations with various groups we feel that we have in place what we will need to ensure that we will have a true reflection of our diverse and multicultural society. We will make sure that there will be full and sensitive inclusion of women, indigenous groups and the rainbow community as keynote speakers and session chairs for CAUTHE 2020.



POTENTIAL SOCIAL FUNCTION VENUES



Sir Paul Reeves Building, AUT

Opening Ceremony and Official Welcoming Cocktail Event

This stunning venue will be perfect for kick starting the conference with a wow! With multiple events spaces and a modern, fully accessible layout, the building will provide a central and convenient location for both the opening ceremony and the cocktail party.



The Museum of Transport and Technology (MOTAT)

Gala Dinner

The CAUTHE gala dinner function can be under the wing of the Sunderland Flying boat or with the backdrop of the Lancaster Bomber at the multi-award winning MOTAT Aviation Display Hall at the Museum of Transport and Technology. This remarkable venue is fully accessible and offers a unique atmosphere. MOTAT is a science and technology museum is centrally located in Western Springs, Auckland, New Zealand. This venue can Host up to 800 guests in cocktail style arrangement or 350 for a seated dinner, the Aviation Display Hall is available in the evening from 6pm until midnight for functions and events.

CONFERENCE MANAGEMENT

AUT Hospitality Services

As professional conference organisers, AUT Hospitality Services offer a fully comprehensive, professional, event and conference management service for the CAUTHE 2020. Services include internal and external venue bookings, catering, audio and visual equipment, conference and event management, and registration and abstract management.

Aut Hospitality Services

AUT Hospitality Services offers clients a fully comprehensive, professional, event and conference management service and has been set up to facilitate AUT's vision of being:

“A University which has active relationships, nationally and internationally with communities, industry, businesses and the professions, in the creation and exchange of knowledge and in the application of learning and research.”

This vision is achieved by hosting conferences and events - bringing academics, business leaders and thought leaders together on campus in a collaborative setting.

Their team of expert Conference and Event Coordinators work with clients to design events from inception to completion, weaving the message and desired outcomes into every element of the event.

AUT Hospitality Services will organise and manage the event so the focus is on guests. Equipped with a full service commercial kitchen, all catering is produced daily in-house to world class standards.

The catering operations team are well versed in all event types. All spaces come equipped with full audio visual setup, including data projection and sound systems (where applicable), plus basic presentation assets such as white boards and the like.

AUT Hospitality Services also offer a full service, in-house, audio visual department, with a large store of state of the art lighting, sound and visual assets at your disposal. Wifi Internet access is available across the whole University and, in most cases, our buildings are equipped with fibre optic networks supplying ultra-fast connectivity. This allows the supply of full live streaming services if required. AUT Hospitality Services is the total solution for all events and conferences.



CONFERENCE THEME

The theme for CAUTHE 2020 is proposed as:

20:20 Vision: New perspectives on the diversity of hospitality, tourism and events

Rationale and relevance

The title reflects an obvious pun on the year being 2020 and the prospect of having 20:20 vision to see clearly into the future. We would like to embrace the diversity and indigenous aspect of tourism and hospitality here in New Zealand and invite the rest of the world to share and celebrate their own diverse perspectives on these phenomena. We feel exploring new perspectives on diversity is very relevant as many countries are currently experiencing intense social, economic and political debate around the value of diversity and in some cases we are seeing a marked increase in exclusionary nationalism and a growing resistance to open migration and cultural diversity. The global nature of hospitality, tourism and events offers great opportunities to discuss the diversity of business models, guiding philosophies, educational and training approaches, research and practices.

The CAUTHE 2020 organising committee are committed to incorporating indigenous Māori tikanga (culture and practice) into the conference both as a response to the unique relationship between Māori and New Zealanders of European descent but also to reflect the diversity theme. Consultation with Maori within the school has resulted in a guiding Whakataukī (proverb) for the conference:

Ma ngaa tikanga o te aroha, te manaaki, te kaitiaki, ka ora ai te koura. Through the processes of aroha (love), manaakitanga (hospitality) and kaitiakitanga (guardianship) the natural resource (koura) are maintained for future generations.

Potential Scientific Committee:

- Professor Alison McIntosh
- Associate Professor Michael Luck
- Associate Professor Jill Poulston
- Associate Professor Peter Kim
- Dr Shelagh Mooney
- Dr Alison Booth
- Dr Hamish Bremner



CONFERENCE PROGRAMME

Draft Schedule, Monday to Thursday, 10-13 February 2020:

DAY 01 MONDAY 10TH

9.00am - PhD, ECR and MCA Afternoon Workshop

7.00pm - Casual Kiwi BBQ and Welcome

DAY 02 TUESDAY 11TH

9.00am - Powhiri (traditional Māori welcome) and Opening Ceremony.
CAUTHE Fellow Announcements

10.00am – 10.30am - Morning Tea

10.30am – 11.30am - 1st Key Note: The Honourable Kelvin Davis - Minister of Tourism

11.30am – 1.00pm - Concurrent sessions

1.00pm – 2.00pm - Lunch

2.00pm – 3.00pm - Concurrent sessions

3.00pm – 4.00pm - Poster session / Afternoon Tea

4.00pm – 5.30pm - SIG Meetings

6.00pm - Official Welcome Cocktail Event

DAY 03 WEDNESDAY 12TH

7.00am - Chapters Breakfast

9.00am - 2nd Keynote: Professor Alison Phipps, University of Glasgow

10.00am – 10.30am - Morning Tea

10.30am – 12.30pm - Concurrent sessions

12.30pm – 1.30pm - Lunch

1.30pm – 3.30pm - CAUTHE AGM

3.30pm – 4.00pm - Afternoon Tea

3.30pm – 5.30pm - Chapter Directors Board Meeting

4.00pm – 5.00pm - Concurrent sessions

FREE DINING NIGHT

DAY 04 THURSDAY 13TH

9.00am – 10.00am - 3rd Keynote: Christopher Luxon, CEO of Air New Zealand

10.00am – 10.30am - Morning Tea

10.30am – 12.30pm - Concurrent sessions

12.30pm – 1.30pm - Lunch

1.30pm – 3.30pm - Concurrent sessions

3.30pm – 4.00pm - Afternoon Tea

4.00pm – 5.00pm - The Great Debate

5.00pm – 5.30pm - Conference Handover and Closing

7pm - Gala Dinner

CONFERENCE TIMELINE

TIMELINE

February 2018

- Bid accepted for CAUTHE 2020

March 2018

- Conference committee and scientific committees are finalised. Sponsorship committee begins approaching potential sponsors.

June/July 2018

- Materials for promoting CAUTHE 2020 are finalised, websites and marketing campaign finalised.

Aug/Sep 2018

- Accommodation providers are finalised. Conference themes and schedules are confirmed.

Nov/Dec 2018

- Call for papers and paper management systems confirmed. Scientific committee process confirmed.

February 2020

- CAUTHE 2020 held in Auckland, New Zealand

Aug - Dec 2019

- Social events are confirmed and final conference details agreed. Budgets confirmed and conference ready to go.

March- June 2019

- Call for papers announced, paper management systems engaged. Ongoing marketing campaign. Sponsorship contracts signed off.

February 2019

- CAUTHE 2020 is promoted at the handover of the CAUTHE 2019 conference.

- **Full Paper Deadline:** October 1st 2019

- **Working paper Deadline:** November 1st 2019

- **Early bird registration Deadline:** December 1st 2019

CONFERENCE CONSIDERATIONS

Consideration of the environmental impacts of the conference

AUT is committed to achieving sustainability and taking action in light of local and global challenges. We continue to nurture a culture of sustainability through learning, teaching, research, partnerships and how we operate our facilities.

Vice-Chancellor Derek McCormack's Taskforce for Sustainability was established in 2012 and developed AUT's sustainability goals across our areas of sustainability commitments. These goals identify how we will achieve objectives over a 10-year period by using the UN Sustainable Development Goals (SDGs) as a framework. In early 2016 AUT became a member of the UN's Sustainable Development Solutions Network. The network was launched to mobilise scientific and technical expertise from academia, civil society and the private sector in the implementation of the SDGs.



BUDGET

CAUTHE 2020 Bid: Re-submission as at 30 January 2018

	150	200	250	300
CONFERENCE INCOME GST EXCLUSIVE				
Total Registration Income	\$104,047.84	\$138,730.45	\$173,413.06	\$208,095.67
Total Workshop Income	\$4,652.16	\$4,652.16	\$4,652.16	\$4,652.16
Total Social Function Income	\$2,152.17	\$2,869.57	\$3,586.96	\$4,304.35
Total Sponsorship / Exhibition Income	\$40,000.00	\$40,000.00	\$40,000.00	\$40,000.00
Total Sponsorship/ Exhibition Income	\$150,852.17	\$186,252.18	\$221,652.18	\$257,052.18
EXPENDITURE GST EXCLUSIVE				
Total Registration Costs	\$5,911.00	\$7,611.00	\$9,311.00	\$11,011.00
Total Speaker Management Costs	\$6,766.96	\$6,766.96	\$6,766.96	\$6,766.96
Total Abstract Management Costs	\$5,100.00	\$7,800.00	\$10,275.00	\$12,750.00
Total Sponsorship/ Exhibition Costs	\$5,125.00	\$5,125.00	\$5,125.00	\$5,125.00
Total Venue Costs	\$20,159.00	\$20,196.00	\$20,233.00	\$20,270.00
Total Catering Costs	\$41,785.00	\$54,693.33	\$67,601.67	\$80,510.00
Total Conference Dinner Costs	\$25,500.00	\$34,000.00	\$42,500.00	\$51,000.00
Total Conference Collateral Costs	\$9,980.00	\$11,680.00	\$13,155.00	\$14,855.00
Total Event Marketing Costs	\$7,250.00	\$7,250.00	\$7,250.00	\$7,250.00
Total Event Management Costs	\$5,760.00	\$6,885.00	\$8,010.00	\$9,135.00
TOTAL EXPECTED EXPENDITURE	\$133,336.96	\$162,007.29	\$190,227.63	\$218,672.96
EVENT CONTINGENCY @ 12%	\$15,291.11	\$18,527.55	\$21,709.99	\$24,919.43
TOTAL EXPENDITURE INCLUDING 12% CONTINGENCY	\$148,628.07	\$180,534.84	\$211,937.62	\$243,592.39
EXPECTED SURPLUS/LOSS	\$2,224.10	\$5,717.34	\$9,714.56	\$13,459.79

Notes:

Registrations

Early Bird

Non-Member, full conference, at \$1,015.00 incl. GST
 CAUTHE Member, full conference, at \$900.00 incl. GST
 Full-time student, full conference, at \$560.00 incl. GST
 Full-time CAUTHE member student, full conference, at \$495.00 incl. GST
 Non-Member Single Day, at \$425.00 incl. GST
 CAUTHE Member Single Day, at \$375.00 incl. GST

Standard

Non-Member, full conference, at \$1,115.00 incl. GST
 CAUTHE Member, full conference, at \$990.00 incl. GST
 Full-time student, full conference, at \$610.00 incl. GST
 Full-time CAUTHE member student, full conference, \$545.00 incl. GST

Non-member, single day, at \$525.00 incl. GST
 CAUTHE member, single day, at \$475.00 incl. GST

Workshops - Full conference attendees

Bill Faulkner PhD Scholar, full day, at \$55.00 incl. GST
 Early Career Researcher (ECR), full day, at \$55.00 incl. GST
 Mid-Career Academic (MCA), 2 hours in pm, at \$20.00 incl. GST

Workshops Only Attendees

Bill Faulkner PhD Scholar, full day, at \$110.00 incl. GST
 Early Career Researcher (ECR), full day, at \$110.00 incl. GST
 Mid-Career Academic (MCA), 2 hours in pm, at \$20.00 incl. GST

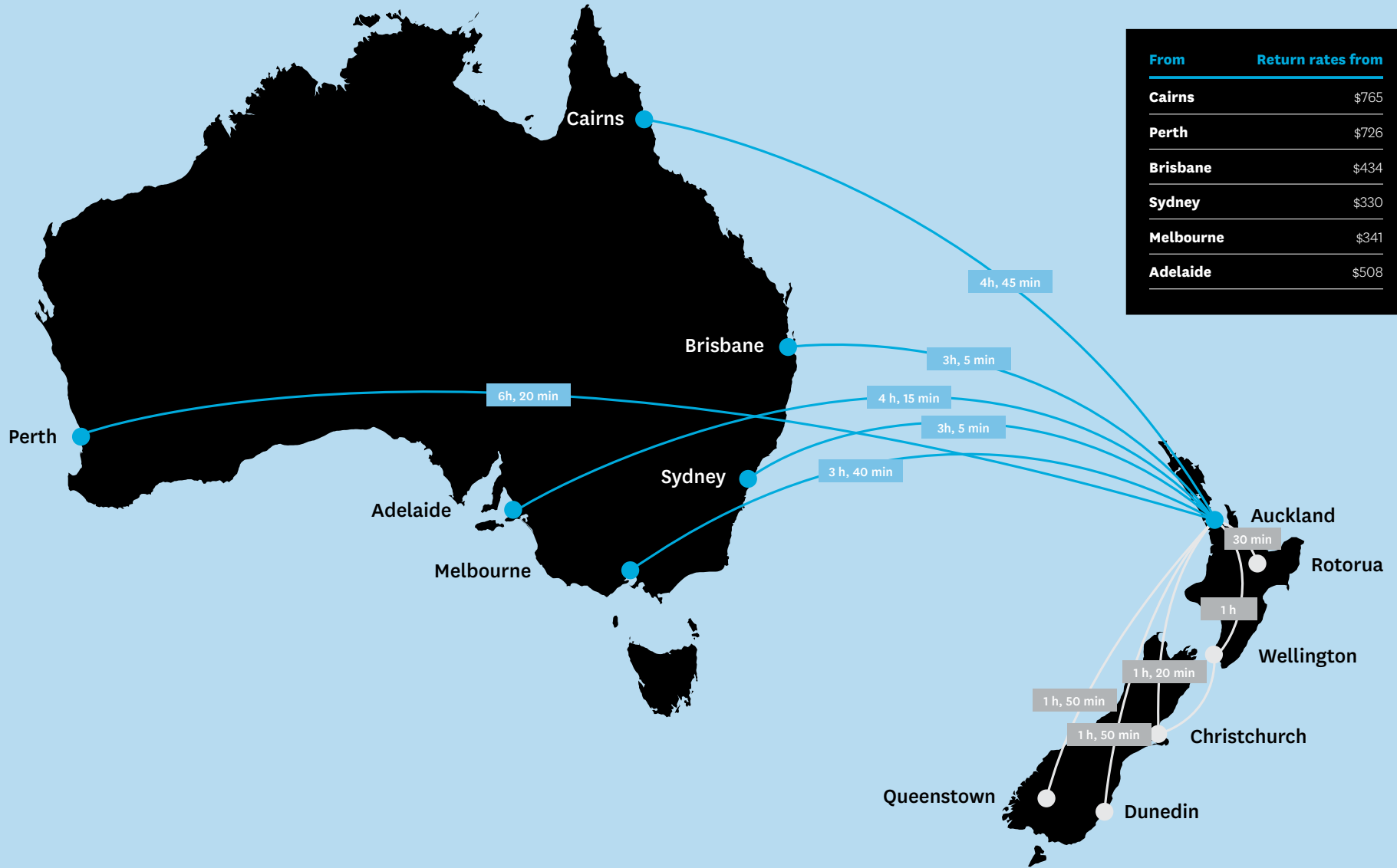
AUT will collect the CAUTHE membership fees as part of the registration process.

SECTION 03.

CONFERENCE DESTINATION

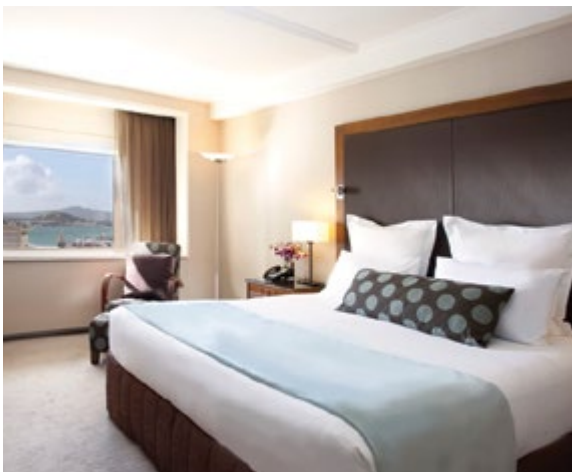


Australian Connections



ACCOMMODATION

Auckland's central business district (CBD) offers more than 7,000 rooms that range in style from 2 star to 5 star accommodation.



Pullman Auckland



Pullman Auckland enjoys stunning views of the Auckland harbour and parks. The hotel is located just a few minutes walk from the city centre and within easy access of many Auckland attractions. The hotel offers 270 beautifully appointed European style guest rooms and suites in the 14 storey Pullman Tower, complemented by 70 deluxe rooms, one and two bedroom apartment style suites and penthouses in the 17 storey residences. Spa at the Pullman offers six New Zealand themed treatment rooms, fully equipped gym, 25 metre heated swimming pool, whirlpool, sauna and steam room—an ideal offering for those with fitness and relaxation in mind.

www.pullmanhotels.com

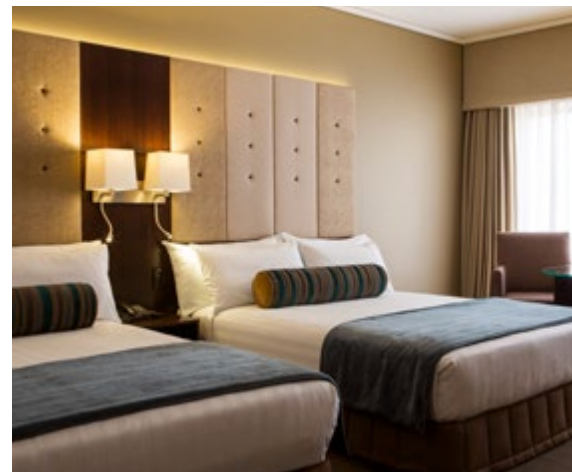


VR Group Hotels & Resorts — The Quadrant Hotel & Suites



The Quadrant Hotel & Suites is a superior 4 star, 277 room hotel in the heart of Auckland city. The hotel offers a range of studio rooms, one and two bedroom apartment suites and a penthouse suite. The family friendly hotel offers Wifi, full kitchen facilities as well as a washing machine/dryer in every room. In addition to the on-site restaurant and bar, the hotel is equipped with a gymnasium, spa and sauna to enhance your stay.

vrhotels.co.nz/quadrant-hotels-suites/



Crowne Plaza Auckland



Conveniently located in the heart of Auckland's business and entertainment district, Crowne Plaza Auckland combines an amazing location and facilities with seamless service.

Featuring 352 spacious, contemporary guest rooms and suites, an award winning restaurant plus 24 hour gymnasium and sauna, Crowne Plaza Auckland is the ideal place for visiting delegates to achieve their business goals and recharge their batteries.

auckland.crowneplaza.com

ACCOMMODATION

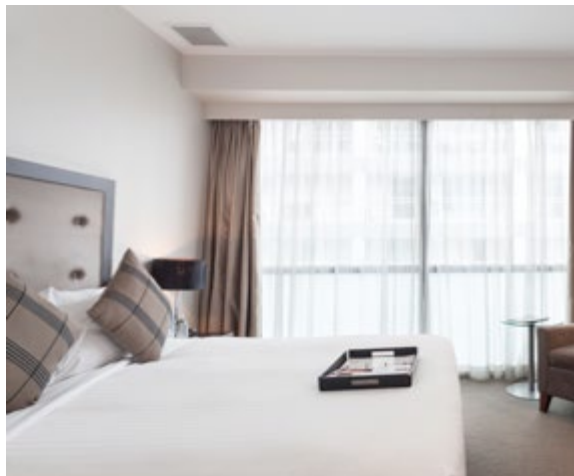


Grand Millennium Auckland



Displaying an air of elegance, the Grand Millennium Auckland continues to be recognised as one of the city's most superior hotels located in the city centre. All of the 452 stylish rooms and suites at our hotel combine smart design, chic décor, floor to ceiling windows for natural light and modern amenities to ensure you have a comfortable stay. Take advantage of quality facilities during your stay, whether it's enjoying a swim in the heated indoor pool or savouring a delicious teppanyaki meal in the hotel's signature Japanese Restaurant Katsura.

www.millenniumhotels.com/en/auckland/grand-millennium-auckland

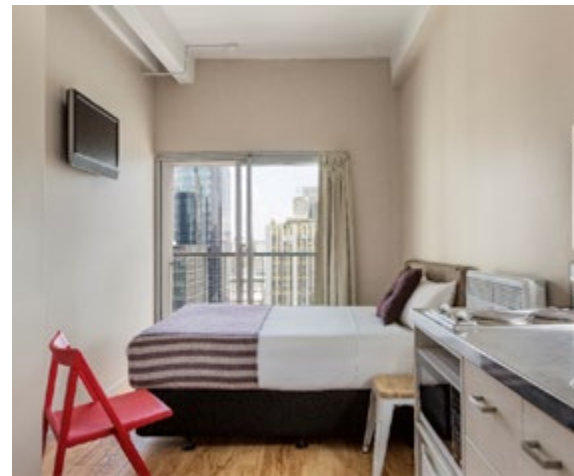


Rydges Auckland



Rydges Auckland is an urban oasis in the heart of Auckland's CBD, a 267 room contemporary 4.5 star hotel, centrally located just a short stroll away from Queen Street, Sky Tower and Viaduct Harbour. The accommodation enjoys breath-taking views over the city or the iconic Sky Tower, while the harbour view accommodation offers panoramic views of the Auckland Harbour Bridge, Westhaven Marina and stunning Waitemata Harbour. The most reputable shopping locations such as High Street, Britomart and Queen Street are all within easy walking distance from the hotel.

www.rydges.com/accommodation/new-zealand/auckland/



Ibis Budget Auckland Central



Enjoying a sensational location just off Queen Street in the heart of Auckland city, Ibis Budget Auckland Central is just a short walk from major Auckland attractions including the SKYCITY Entertainment and Casino complex and Viaduct Harbour. With its 141 rooms featuring balconies and some with kitchenette facilities, Ibis Budget Auckland Central offers easy access to transport including local trains and buses.

www.accorhotels.com/gb/hotel-6487-ibis-budget-auckland-central/index.shtml

PROXIMITY MAP

Visual representation of the location of accommodation providers within close proximity to proposed venues within Auckland.



Auckland University of Technology (AUT)

1. Pullman Auckland
2. The Quadrant Hotel & Suites
3. Crowne Plaza Auckland
4. Grand Millennium Auckland
5. Rydges Auckland
6. Ibis Budget Auckland Central

Airport Transfers

The central business district is just 20km from Auckland Airport. The SkyBus provides a frequent service between the airport and inner city hotels at a cost of NZ\$35 return or NZ\$18 one way. A shuttle service (share ride option) is available at NZ\$30 for the first passenger and NZ\$8 for each additional passenger to a maximum of seven passengers. The 35 minute taxi ride from the airport to central business district costs approximately NZ\$70.

(Prices are correct as at June 2017 and subject to change).



ATTRACTIONS

On the water

Auckland is surrounded by water, with the sea right on the city's doorstep. There are so many ways to explore, from jet boating and kayaking to sunset dinner cruises and scenic ferry rides. You can even help sail an America's Cup yacht.

Island adventures

Auckland's Hauraki Gulf Marine Park encompasses 1.2 million hectares of coast, sea and islands—and it's so easy to explore. The jewel of the Hauraki Gulf is Waiheke Island, a haven of beautiful vineyards, olive groves and beaches—just a 35 minute ferry ride from downtown Auckland. You can sample award-winning drops from some of the island's 30 boutique vineyards, enjoy fine dining and take in the island's stunning views of the outer Hauraki Gulf and city. Take a ferry or kayak to Rangitoto Island, Auckland's most iconic natural landmark, where you can walk or take a guided 4WD tour to the summit for breathtaking 360-degree views. Tiritiri Matangi Island is an open wildlife sanctuary and one of the most successful conservation projects in the world, making it a great destination for nature lovers. Discover the crystal-clear waters of Kawau Island, the fascinating history of Rotoroa Island—now open to the public for the first time in 100 years—or the remote untouched wilderness of Great Barrier Island.

Arts and culture

Immerse yourself in Māori and Pacific culture. See the amazing collection of Māori taonga (treasures) at Auckland Museum, where you can also catch a traditional Māori cultural performance. Take a walking tour of Auckland's volcanoes with a guide from the local Māori iwi (tribe) and learn about the Māori people's special connection to the land. Visit Auckland Art Gallery Toi o Tāmaki, which houses more than 15,000 artworks, from the old masters and some of New Zealand's best contemporary artists. Take a walk through New Zealand Maritime Museum to discover the way the sea has shaped New Zealand's history and cultural identity. Learn about the Polynesian people's epic migration to New Zealand on traditional sailing waka (canoes) or go sailing in a waka yourself. Auckland's rich cultural heritage can be seen, felt and experienced all throughout the region.

Todd Eyre

Sailing on the Waitemata Harbour



Māori Culture at Auckland Museum



Waiheke Island, Auckland

ATTRACTIONS

Shopping

It's easy to indulge in some top-notch retail therapy when you're in Auckland. The beautifully restored historic buildings in Britomart are home to the flagship stores of New Zealand's most internationally successful designers, including Zambesi, WORLD and Kate Sylvester. These sit alongside top international fashion and beauty labels. Hop on a bus from the city centre and find yourself at one of Auckland's other top fashion precincts within minutes. Ponsonby Road, Parnell, Newmarket and the High Street/Vulcan Lane quarter of the city offer everything from the exclusive to the quirky. You can also browse local markets to pick up quality foods, fashion and Kiwi arts and crafts.

Food and wine

Surrounded by fertile land and rich waters, Auckland is blessed with great produce on its doorstep. These days it also boasts worldclass chefs, food producers and winemakers, and is internationally recognised as a foodie destination. From degustation delights to seafood restaurants and ethnic fusion, it's all here. Auckland is also surrounded by wine regions, with more than 80 vineyards within 20 kilometres of the central city. Sample award-winning wines on an exclusive tour, excite the taste buds on a food tour, or enjoy great local produce at the Auckland Fish Market, or one of the region's many farmers' markets.

From mild to wild

Auckland's extraordinary variety means there's an adventure to suit everyone. You can bungy jump off the Auckland Harbour Bridge, go canyoning down waterfalls, heli-fish on a distant Hauraki Gulf island or quad bike through the forest. For something more mellow, walkers can tramp through native rainforest or along spectacular coastal paths in Auckland's regional parks, go horse riding along a deserted white-sand beach, or indulge in luxury spa treatments or personalised shopping tours.

Golf

With more than 40 coastal and inland courses throughout the region, Auckland is an ideal spot for a round of golf. Whether you're after international quality resort courses or picturesque local gems, there's a perfect round for players of all abilities.

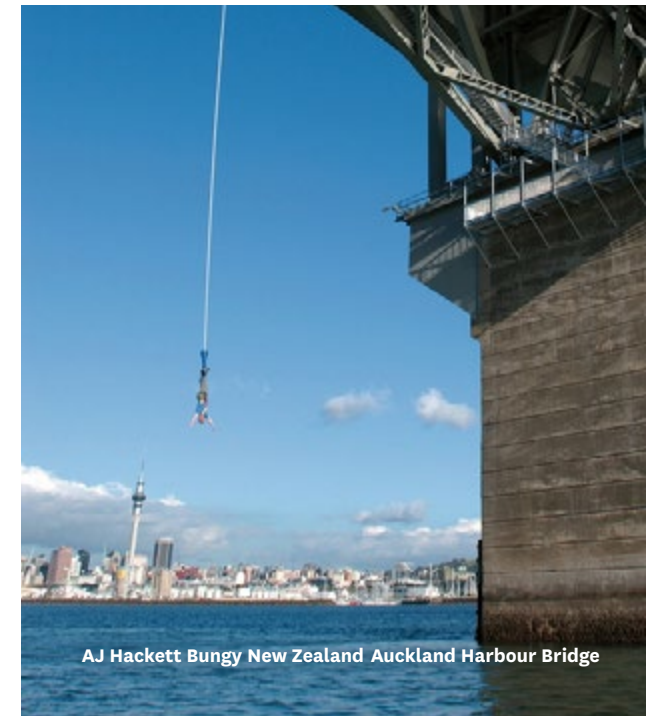
Fraser Clements

Designer shopping in Auckland



Chris McLennan

Seaside Golf Resort in Auckland



AJ Hackett Bungy New Zealand Auckland Harbour Bridge

TRAVEL INFORMATION

New Zealand: what you need to know



Climate

The far north of New Zealand is subtropical whilst the south is more temperate. The warmest months are traditionally December, January and February, and the coolest June, July and August.

In summer, the average maximum daytime temperatures range between 20 – 30°C and in winter between 10 – 15°C. You can check weather conditions in New Zealand on the New Zealand MetService website:

www.metservice.com.



Mobile telephones

Check with your phone company before leaving home about international mobile roam facilities available in New Zealand. Alternatively you can hire or buy mobile phones or SIM cards in New Zealand. Note that signal is not available in all rural areas.



Healthcare

New Zealand's public and private medical and hospital facilities provide a high standard of treatment and care. Medical services are not free to visitors. It's recommended you purchase travel and health insurance before you visit. No vaccination certificates are required. There are no snakes or dangerous wild animals in New Zealand.



Money

New Zealand's currency is the dollar (NZD). You can use all major credit cards in New Zealand, with Visa and MasterCard accepted most widely.



Internet and Wi-Fi access in New Zealand

If you're looking to stay connected to the internet everywhere you go, it's recommended that you purchase a plan from one of New Zealand's main networks. Purchasing a plan from a network will allow you to access a mix of data, calling and texting throughout your trip to suit your communication and connection needs. You will find that free Wi-Fi is available in most hotel accommodation and hospitality outlets.



Electricity

New Zealand's electricity supply runs at 230/240 volts, and we use angled two or three pin plugs (the same as Australia).

